

Glimpses of NSD 2018...



Observing sunspots...

Science models...



Paintings...



Science Quiz...



Exhibition...



How to reach Radio Astronomy Centre?

Take a bus from Ooty bus station going towards M.Palada / Nanjanadu / Kallakkorai / Ithalar / Emerald and get down at Muthorai village. A pleasant uphill walk of 1 km from Muthorai will lead to RAC. In an alternate route, take a bus to Melkavatty village and get down at the main gate of RAC.



For further details contact

**Convenor, NSD – 2019,
Radio Astronomy Centre,
Post Box No. 8,
Udhagamandalam – 643 001.**
✉ racnsd@wm.ncra.tifr.res.in
☎ 0423 2244880 /2244888
🌐 <http://rac.ncra.tifr.res.in>
📘 [facebook.com/rac.nsd2019](https://www.facebook.com/rac.nsd2019)
🐦 twitter.com/NSD2019



NCRA • TIFR

Radio Astronomy Centre

**National Science Day
February 28, 2019**



*National Centre for Radio Astrophysics
Tata Institute of Fundamental Research*

National Centre for Radio Astrophysics

The National Centre for Radio Astrophysics (NCRA) is part of the Tata Institute of Fundamental Research (TIFR), which is funded by the Government of India through Department of Atomic Energy. The NCRA operates two major observational facilities, Giant Metrewave Radio Telescope (GMRT) and Ooty Radio Telescope (ORT). The Giant Metrewave Radio Telescope (GMRT) located near Pune in India, is an array of thirty fully steerable telescope of 45m diameter, observing at metre wavelengths. The GMRT is a modern, highly versatile radio telescope, equipped with the state-of-the art electronics.

The ORT is maintained by the Radio Astronomy Centre (RAC), located in Muthorai village, in the Nilgiri Hills. It is a cylindrical paraboloid of reflecting surface, 530m long and 30m wide, placed on a hill slope of $\sim 11^\circ$ to make the rotation axis of the telescope parallel to the rotation axis of the Earth. The reflecting area of the ORT is more than the size of three football fields, which makes it one of the largest telescopes in the world. Over the last 45 years, the ORT has produced several important astronomical results on radio galaxies, quasars, supernovae, pulsars, interstellar and interplanetary media, etc.

Above facilities provide stimulating environment for the front-line research in radio astronomy and astrophysics and they are being used by national as well as international researchers.



National Science Day (NSD) 2019

The National Science Day is celebrated every year on 28th February, all over the country, to **commemorate the discovery of The Raman Effect by Sir C.V. Raman in 1928, for which he was awarded the Nobel Prize in Physics.**

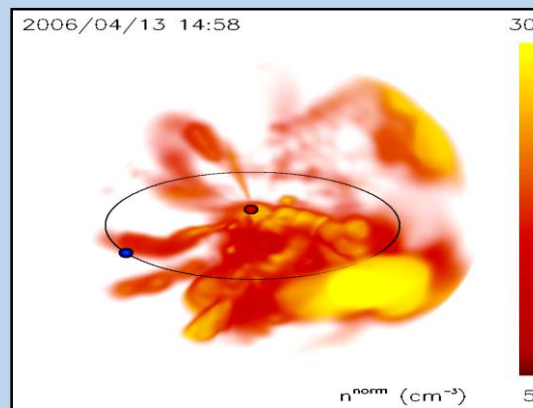
The program at the Radio Astronomy Centre includes:

- 📖 Exhibits from various scientific and research organizations.
- 📖 Display of science models from various schools
- 📖 Demonstrations on astronomy and astrophysics
- 📖 The Sun and Sunspots
- 📖 Live observations of celestial objects

**Venue : Radio Astronomy Centre,
Muthorai, Ooty.**

Time : 9.00 AM - 5.00 PM

Date : 28th February 2019



3D view of the density in the inner heliospheres from Ooty Interplanetary Scintillation (IPS) data

Associated Events

Following Associated Events in connection with the **National Science Day** will be conducted on **8th February 2019, at RAC, Ooty.**

🏆 Science Essay Writing (Tamil & English)

🏆 Quiz

🏆 Painting

🏆 Science Model

Please note that deadline for the registration for associated events is **5th February 2019**. The venue of the event will be RAC, Muthorai campus.

Events will be conducted in four levels

Level 1: Classes 5 to 7

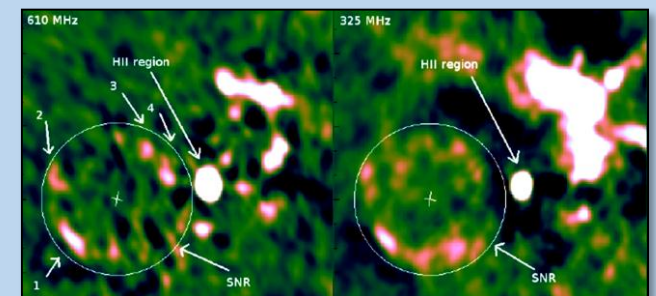
Level 2: Classes 8 to 10

Level 3: Classes 11 & 12

Level 4: B.Sc. /M.Sc. /B.E /B. Tech.
(Science models only)

NOTE

For Science model and Quiz events, two students can form a team for each level and participate, whereas for Essay writing and Painting, individual student have to participate. Participating students should produce their I.D proof / bonafide certificate from their respective schools.



325 and 610 MHz GMRT image of a HESS J1731-347 high energy supernovae remnant